



Pastor Message
Ellen Gurnon

Dear Members and Friends,

PROCEED WITH CAUTION

I'd like to say I'm excited about welcoming you back to in-person worship this month. Part of me certainly is; I've missed you! But I must admit, a more accurate description of my feelings would be *cautiously optimistic*.

I know we are all praying that God would make this pandemic go away. But I was reminded recently in another newsletter, that God most often answers our prayers through the work of human beings. Sort of like when you present a good idea in a group, it's likely you will be put in charge of making it happen! We all must participate in ridding the world of this terrible virus.

Worship in person will be different than it was last March. Following is a list of important procedures to be followed to keep everyone safe. Please know that you are doing God's work and helping to answer many prayers when you take them seriously.

First and foremost, please do not feel obligated to attend worship in person if you are vulnerable due to age or health, or simply wish to be extra cautious. Your attendance online is equally valuable and faithful and is an act of love for your neighbor and yourself.

If you are planning to attend, PLEASE adhere to the following:

- **If you have a fever, or are not feeling well, please stay home.**
- **Hand sanitizer** will be available outside the sanctuary.
- **Remember to wear a mask** while entering and exiting and moving about the building.
- **Keep plenty of space between yourself and others** when entering and exiting and when moving about the building.
- **Refrain from hugging and shaking hands.**
- **Seating** will be in every other pew, with no more than FOUR (4) unrelated people in each pew. You may remove your mask while seated.
- **We will not be singing hymns**, but a soloist or small group will provide music.
- **We will not pass the offering plate**, but one is on a table in the Narthex for you to place your offering before you leave.
- **Use the restroom one person at a time.** Wash your hands thoroughly before leaving the restroom.
- For **communion**, pre-packaged cups and wafers will be provided.

Health and peace,

Ellen



LECTIONARY

September 6th

Exodus 12:1–14
Psalm 149
Romans 13:8–14
Matthew 18:15–20

September 13th

Exodus 14:19–31
Psalm 114 or Exodus 15:1b–11, 20–21
Romans 14:1–12
Matthew 18:21–35

September 20th

Exodus 16:2–15
Psalm 105:1–6, 37–45
Philippians 1:21–30
Matthew 20:1–16

September 27th


Exodus 17:1–7
Psalm 78:1–4, 12–16
Philippians 2:1–13
Matthew 21:23–32

Calendar

September 6th

Worship Service
9:15a.m.


Westminster Presbyterian Church
Communion Served

 [Livestream Worship Service](#)
10:45 a.m.

September 13th

Worship Service
9:15a.m.

Westminster Presbyterian Church

 [Livestream Worship Service](#)
10:45 a.m.

September 20th

Worship Service
9:15a.m.

Westminster Presbyterian Church

 [Livestream Worship Service](#)
10:45 a.m.

September 27th

Worship Service
9:15a.m.

Westminster Presbyterian Church

 [Livestream Worship Service](#)
10:45 a.m.



Westminster Chimes

September 2020



On September 6th, those attending the in-person service at Westminster, will receive communion a little differently. A gloved Elder will offer a pre-packaged wafer and juice in a single container as pictured on the left. You will be able to remain seated and partake of the elements as instructed from the pulpit.

All of those attending the live-stream service on line will be prompted to take elements at home during the September 6th service as well.

Diana Campbell

September 1

Wanda Brown

September 2

Velda Price

September 5

Walt Schroeder

September 8

Doris Ford

September 21



Miss Hazel has moved
to the Lutheran Home

Assisted Living East Room A – 7.

2825 Bloomfield Rd., Cape Girardeau, MO
63703

She misses her church family
and would love to hear from us.

Her cell phone number is 573-275-1611.

Session Notes

BUILDINGS & GROUNDS

- The dehumidifier and sump pump in the basement are working well. 😊
- An estimate to resurface the flat section of the roof is being obtained from Sailor Roofing.
- Considering options and obtaining estimates for resurfacing the north parking lot.
- Continuing to obtain additional estimates for repairing the marquee sign.



PEACE & GLOBAL WITNESS

SPECIAL OFFERINGS ~

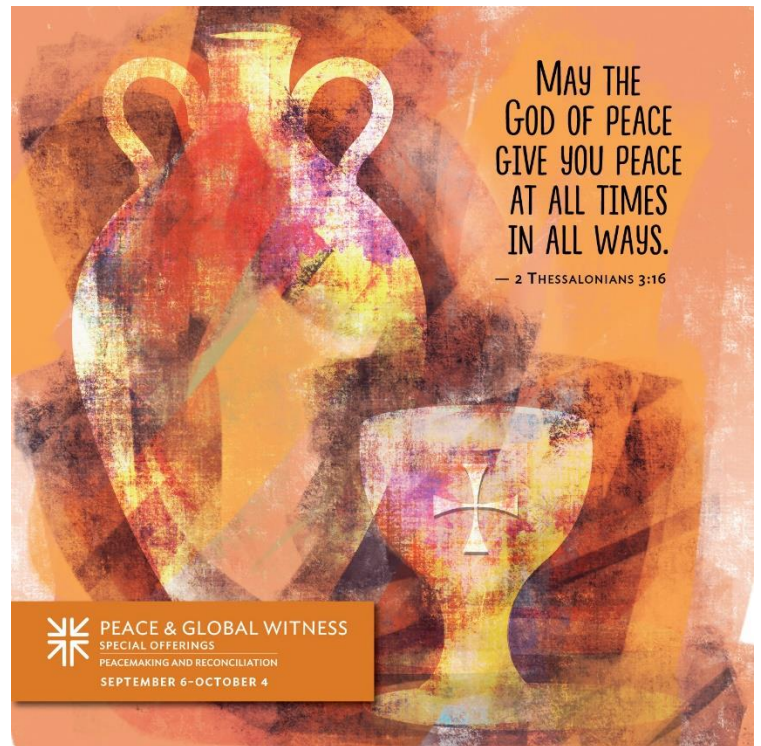
Collected on World Communion Sunday

October 4, 2020

25% of funds from our congregation

Will go directly to the local

Safe House for Women



your impact

Equipping Peacemakers in Congregations and Around the World.

A gift to the Peace & Global Witness Offering enables the church to promote the Peace of Christ by addressing systems of conflict and injustice across the world. Individual congregations are encouraged to utilize up to 25% of this Offering to connect with the global witness of Christ's peace. Mid councils retain an additional 25% for ministries of peace and reconciliation. The remaining 50% is used by the Presbyterian Mission Agency to advocate for peace and justice in cultures of violence, including our own, through collaborative projects of education and Christian witness.